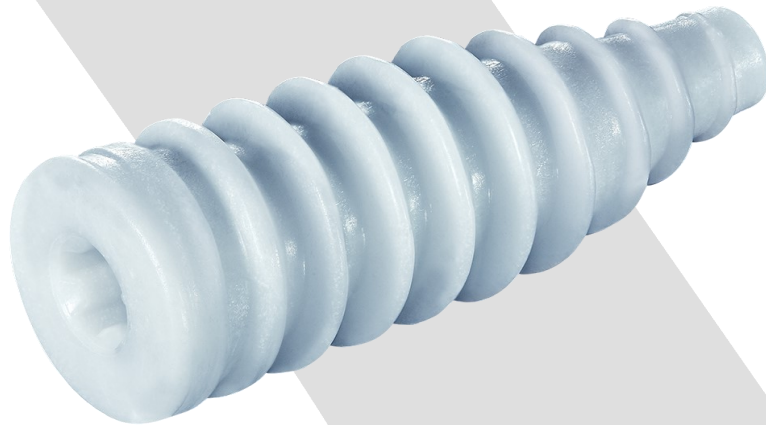
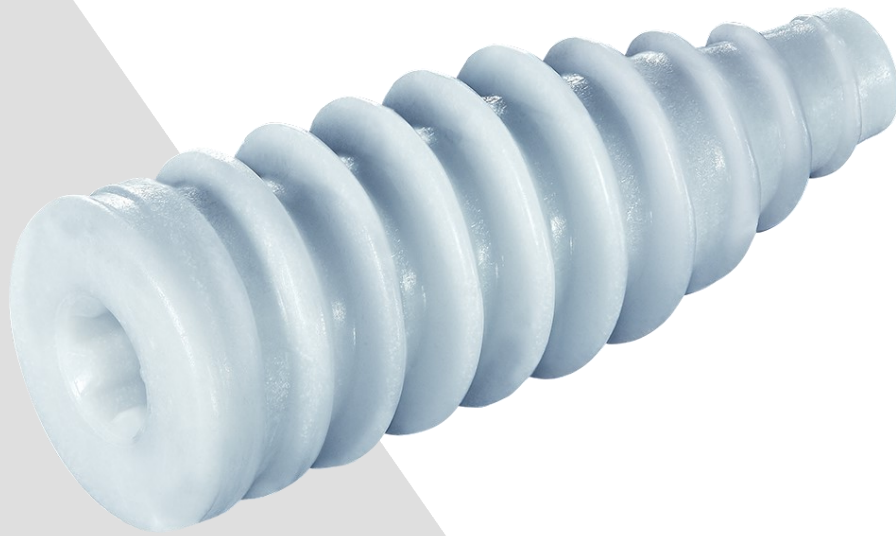


Technical sheet

# **ECLIPSE<sup>®</sup> BCP**

Composite interference screw



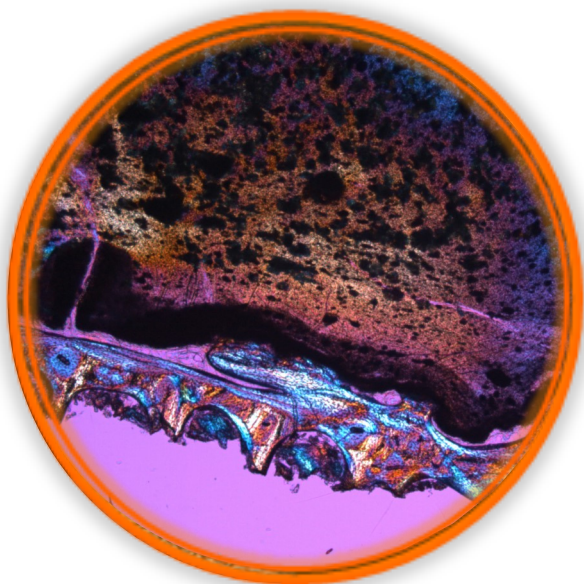
Distributed by



**AMPLITUDE<sup>®</sup>**

## Features

- Canulated composite interference screw
- Progressive insert
- Range :
  - Diameters 7/8/9 mm Length 20/25 et 30mm
  - Diameters 10mm Length 25 et 30mm
  - Diameters 11/12 mm length 35mm



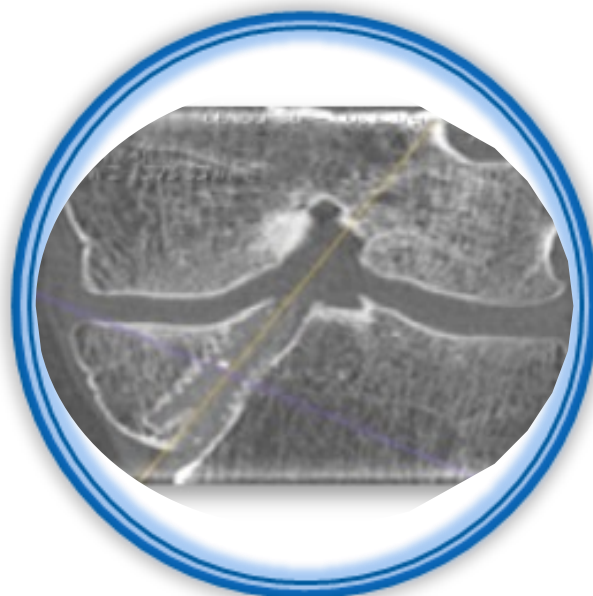
## Material

**PLADLLA 75% / BCP 25%**

- PLDLLA, polylactic acide L & D
- BCP, 20% hydroxyapatite  
80% phosphate tricalcique

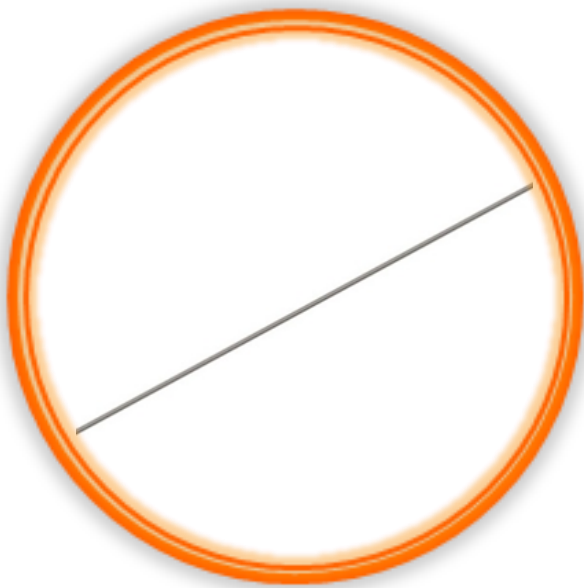
## Study

- Comparative study\*\* by CT-Scan at 2 years follow up show PLDLLA interference screw with BCP can reduce the extent of resorption while improving ossification and reducing tunnel widening. can reduce the extent of resorption while improving ossification, reducing tunnel widening,



## Screwing instrumentation : the choice

- Ratcheting trinkle driver handle : Amplitude
  - Shank screwdriver
  - Shank starter



- Screw Guidewire 1.1 mm diameter
  - Rigid : Amplitude
  - Nitinol : Biomatlante

- Monobloc: Biomatlante
  - screwdriver
  - starter



# References

## ECLIPSE® BCP Composite interference screw

Manufactured by Biomatlante 

Composite Interference Screw ECLIPSE® BCP Ø 7 Lg 20 mm	1-0402771
Composite Interference Screw ECLIPSE® BCP Ø 7 Lg 25 mm	1-0402772
Composite Interference Screw ECLIPSE® BCP Ø 7 Lg 30 mm	1-0402773
Composite Interference Screw ECLIPSE® BCP Ø 8 Lg 20 mm	1-0402781
Composite Interference Screw ECLIPSE® BCP Ø 8 Lg 25 mm	1-0402781
Composite Interference Screw ECLIPSE® BCP Ø 8 Lg 30 mm	1-0402783
Composite Interference Screw ECLIPSE® BCP Ø 9 Lg 20 mm	1-0402791
Composite Interference Screw ECLIPSE® BCP Ø 9 Lg 25 mm	1-0402792
Composite Interference Screw ECLIPSE® BCP Ø 9 Lg 30 mm	1-0402793
Composite Interference Screw ECLIPSE® BCP Ø 10 Lg 25 mm	1-0402702
Composite Interference Screw ECLIPSE® BCP Ø 10 Lg 30 mm	1-0402703
Composite Interference Screw ECLIPSE® BCP Ø 11 Lg 35 mm	1-0401004
Composite Interference Screw ECLIPSE® BCP Ø 12 Lg 35 mm	1-0401024

## Instrumentation Set

Manufactured by AMPLITUDE 

Modular Instrumentation Set In-Out	2-0299940
Modular Instrumentation Set Out-In	2-0299957

Creation date : March 2019 – Composite interference screw BCP Legal manufacturer : Biomatlante • 5 rue Édouard Belin • Z.A. Les IV Nations • 44360 • Vigneux-de-Bretagne • France – Destination : medical device for Knee ligament surgery  
–instrumentation set legals manufacturers : Amplitude , 11 cours Jacques Offenbach, 26000 Valence, France and Biomatlante • 5 rue Édouard Belin • Z.A. Les IV Nations • 44360 • Vigneux-de-Bretagne • France

### Customer Service-France :

Porte du Grand Lyon,  
01700 Neyron, France  
Tel. : +33 (0)4 37 85 19 19  
Fax : +33 (0)4 37 85 19 18

E-mail : [amplitude@amplitude-ortho.com](mailto:amplitude@amplitude-ortho.com)

### Customer Service-Export :

11, cours Jacques Offenbach. Zone Mozart 2,  
26000 Valence, France  
Tel. : +33 (0)4 75 41 87 41  
Fax : +33 (0)4 75 41 87 42

Internet : [www.amplitude-ortho.com](http://www.amplitude-ortho.com)

Reference : FT.GB.013/3.0